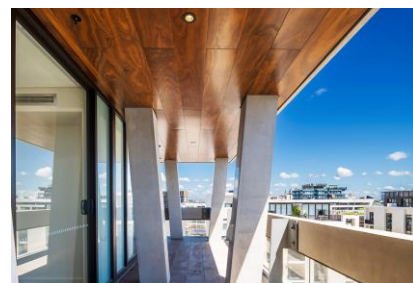




Pre-finished plywood panel with wide board styling



### Product Description

Connectaply is a pre-finished plywood panel system that offers the styling of wide timber boards. Made using only select "A" grade Araucaria (hoop pine) face veneers, Connectaply panels are 280mm in width, recreating a classic solid timber look. Connectaply is an exterior grade plywood panel, designed for use in semi-exposed areas such as balcony ceilings, alfresco areas and soffits. Connectaply is also popular as an internal feature wall or ceiling lining.

Tongue and grooved on all sides, each piece of Connectaply measures 2400mm (L) x 280mm (W) x 12mm (T), with each piece locking into the next whilst concealing the screw fixings. Connectaply offers a variety of installation patterns (brickwork, grid, horizontal, vertical, diagonal) and can be easily installed by a single tradesperson.

### Manufacturing details

Species:	Araucaria (Hoop Pine)		
Face/Back Grade:	AC		
Core Grade:	D Multiply		
Dimensions:	2400 x 1120mm (per box of 4 pieces).		
Thicknesses:	12mm		
Glue System:	A-Bond Phenolic (black glueline)	Bond Warranty:	25 years
Prefinished:	Yes	Coating Warranty:	7 years
Colours:	Natural Hoop, Blackbutt, Spotted Gum, Jarrah, Walnut, Ebony, Ash		

### Certifications and technical details

Environmental Certification:	RW/PEFC
Fixing System:	Concealed direct screw fix
Fire Rating (Group No.):	3

### Additional information

Link to Austral website:	<a href="http://www.australply.com.au/connectaply">http://www.australply.com.au/connectaply</a>
Buy direct online:	<a href="https://shop.australply.com.au/collections/prefinished-feature-panels/products/connectaply">https://shop.australply.com.au/collections/prefinished-feature-panels/products/connectaply</a>
Product Brochure:	<a href="http://www.australply.com.au/images/pdf/br/Brochure-connectaply.pdf">http://www.australply.com.au/images/pdf/br/Brochure-connectaply.pdf</a>
Installation Guide:	<a href="https://www.australply.com.au/images/pdf/connectaply%20Installation%20Guide.pdf">https://www.australply.com.au/images/pdf/connectaply%20Installation%20Guide.pdf</a>



**AUSTRAL  
PLYWOODS**

Fact Sheet

07 3426 8666  
sales@australply.com.au  
www.australply.com.au

*100% Australian  
made, since 1925*